

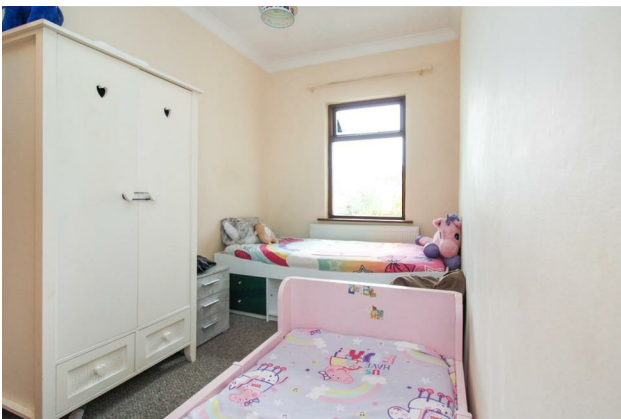
# HUNTERS<sup>®</sup>

HERE TO GET *you* THERE

**11 Dinsdale Buildings, Yeadon, Leeds, LS19 7SG**

**£750**

**Property Images**



# HUNTERS<sup>®</sup>

HERE TO GET *you* THERE

## Property Images



## Floorplan

## EPC

Energy Efficiency Rating		
	Current	Potential
Very energy efficient - lower running costs		
(92 plus) <b>A</b>		
(81-91) <b>B</b>		
(69-80) <b>C</b>		
(55-68) <b>D</b>		
(39-54) <b>E</b>	43	44
(21-38) <b>F</b>		
(1-20) <b>G</b>		
Not energy efficient - higher running costs		
<b>England &amp; Wales</b> EU Directive 2002/91/EC		

## Map



## Details

Type: House - Terraced Beds: 2 Bathrooms: 1 Receptions: 1 Tenure:

## Summary

**\*AVAILABLE STRAIGHT AWAY\*PETS CONSIDERED\***

A well presented TWO DOUBLE BEDROOM end of terrace in an enviable location close to Yeadon town centre. The property benefits from ALLOCATED PARKING and is ideally located for commuting to Leeds, Bradford and Guiseley.

Internally the property comprises of MODERN KITCHEN, lounge with gas fire, two double bedrooms and bathroom with BATH, SHOWER CUBICLE, WC and WASH BASIN. There is also a useful storage cellar. The property has a PRIVATE PARKING space to the front.

Viewing is recommended. EPC rating E

## Features

• PETS CONSIDERED • STORAGE CELLAR • ENVIABLE LOCATION • PRIVATE PARKING • TWO DOUBLE BEDROOMS • COUNCIL TAX BAND B